

GENERAL NOTES:

- All work to comply with Building Code of Australia, requirements of relevant Statutory Authorities/ Local Government & relevant Australian Building Standards
- Contractor to verify all dimensions on site before commencing work; should a discrepancy be identified please confirm with Architect prior to proceeding (do not scale from drawings)
- Copyright of design shown hereon is retained by this office and authority is reserved for any reproduction
- When proprietary products are referred to, imply in accordance with the manufacturer's written instructions

LEGEND:

AW AWNING TO FUTURE DETAIL  
BS BATTEN SCREEN TO FUTURE DETAIL  
ELEC ELECTRICAL SERVICES TO FUTURE ENG'S DETAILS  
FS FIRE STAIRS  
FH FIRE HYDRANT  
FHR FIRE HOSE REEL  
HW HIGHLIGHT WINDOW

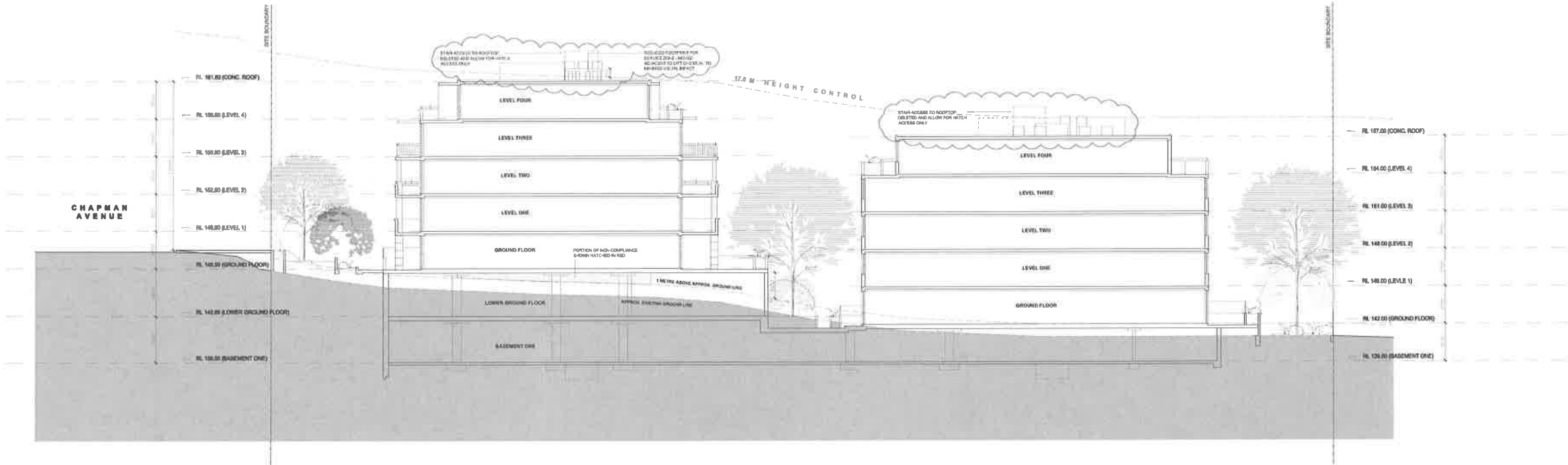
LS LANDSCAPING (REFER TO LANDSCAPE ARCHITECT'S DRAWINGS)  
MB CAST IRON/ METAL BALUSTRADE TO FUTURE DETAIL  
MV MECHANICAL RISER (TBC BY CONSULTANT - PRELIMINARY LOCATION ONLY)  
OP OPAQUE GLASS TO FUTURE SELECTION  
PB PLANTER BOX TO FUTURE DETAIL  
PC COMPOSITE PANEL CLADDING

PS PRIVACY SCREEN (TO FUTURE SELECTION)  
RC FC CLADDING BOX SECTION ROOF CANOPY WITH DIRECTIONAL ELLIPTICAL ALUMINUM POWER COATED PIN LOUVER (FIXED)  
RG RENDERED GROOVES  
RW RENDERED WALL/ SELECTED PAINT FINISH  
SC STONE CLADDING (TO FUTURE DETAIL)  
SK SKYLIGHT TO FUTURE DETAIL

SW STORMWATER PIT TO HYDRAULIC ENG'S DOCUMENTATION  
TS TIMBER APPEARANCE PRIVACY SCREEN TO FUTURE DETAILS

COLOUR LEGEND:

P1 DULUX PAINT - MUD PACK (P14B4)  
P2 DULUX PAINT - LIMED WHITE (P13B1)  
P3 DULUX PAINT - BUFF IT QUARTER (P11B1Q)



SECTION A - A

DEVELOPMENT APPLICATION DRAWINGS  
PROPOSED APARTMENTS

1-5 CHAPMAN AVENUE, BEECROFT  
CLIENT: Caxton Property (Chapman) Pty Ltd



DA11  
SECTION A-A  
ISSUE C  
27 FEBURARY 2014

PBD | ARCHITECTS

P - (02) 9688 8140 F - (02) 9688 2021 E - info@pbdarchitects.com.au W - www.pbdarchitects.com.au  
Studio 302, Level 3, 50 Holt Street, Surry Hills NSW 2010

Contractor to verify all dimensions on site before commencing work.  
Copyright of designs shown hereon is retained by this office and authority is required for any reproduction.